

SENSE-SCAPE

DESIGN INTENTIONS



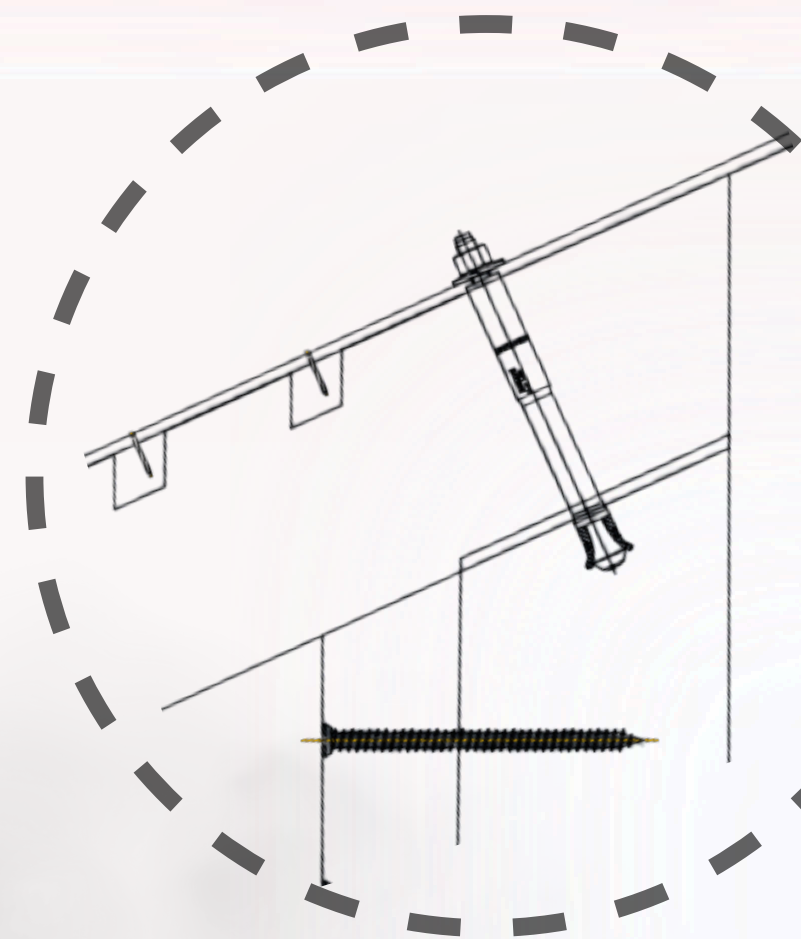
Emotional regulation, sensory awareness, and calm.



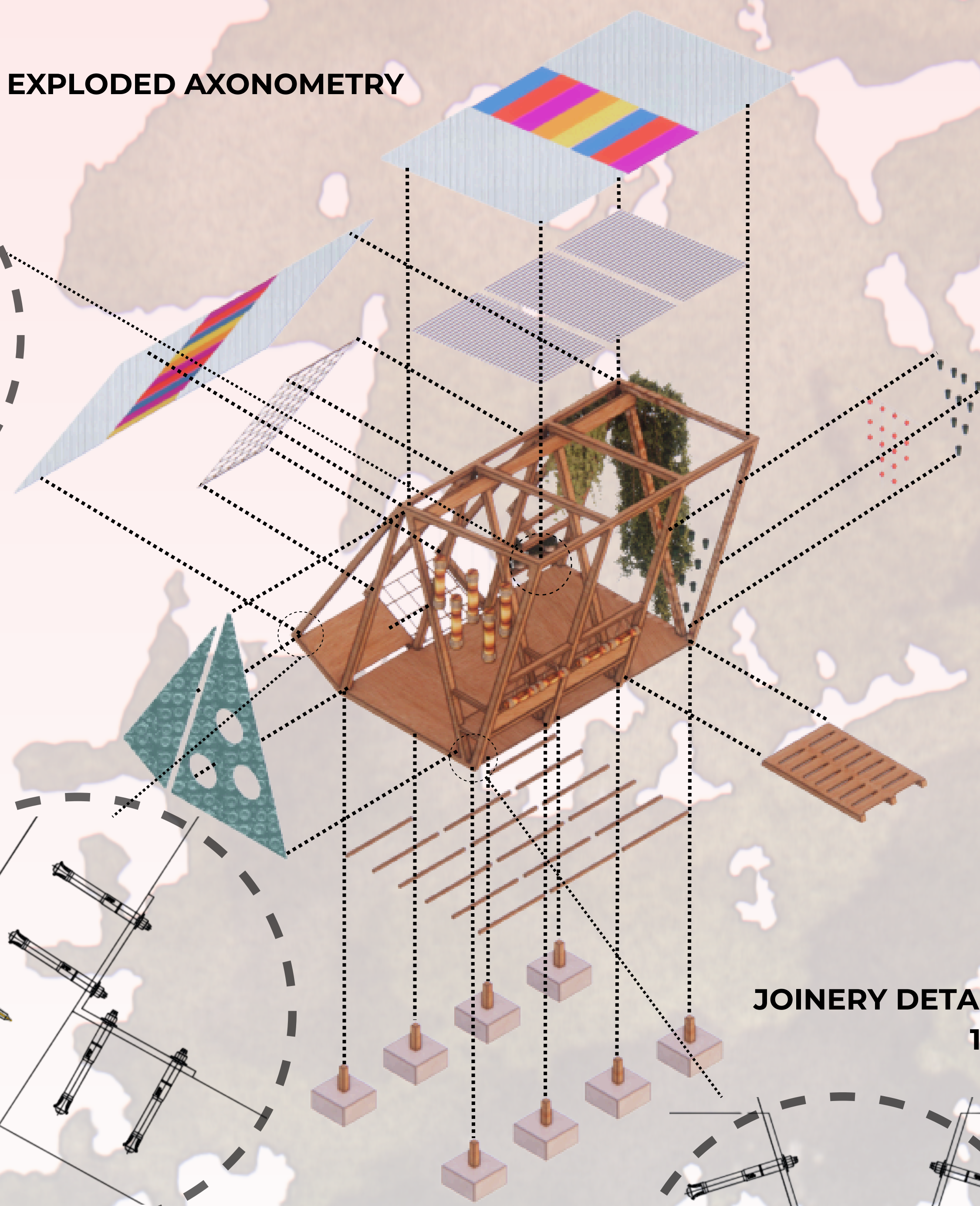
A pause space surrounded by greenery and natural textures.



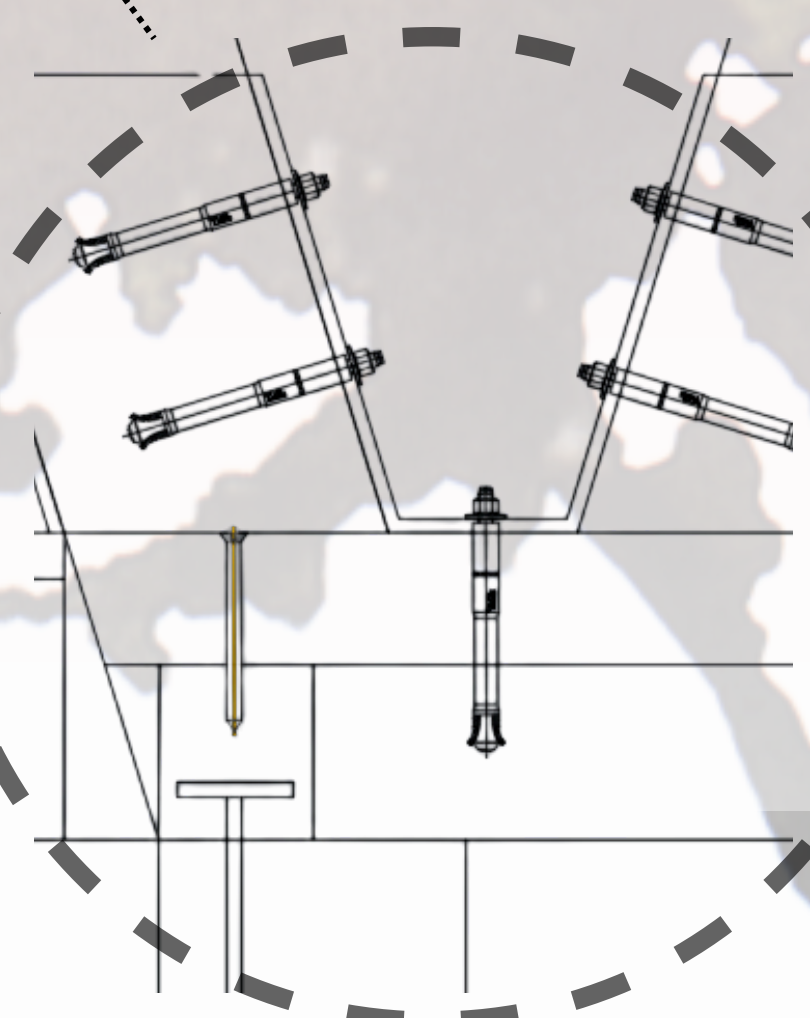
Foster relationship between able-bodied residents



EXPLODED AXONOMETRY



JOINERY DETAIL 1:5

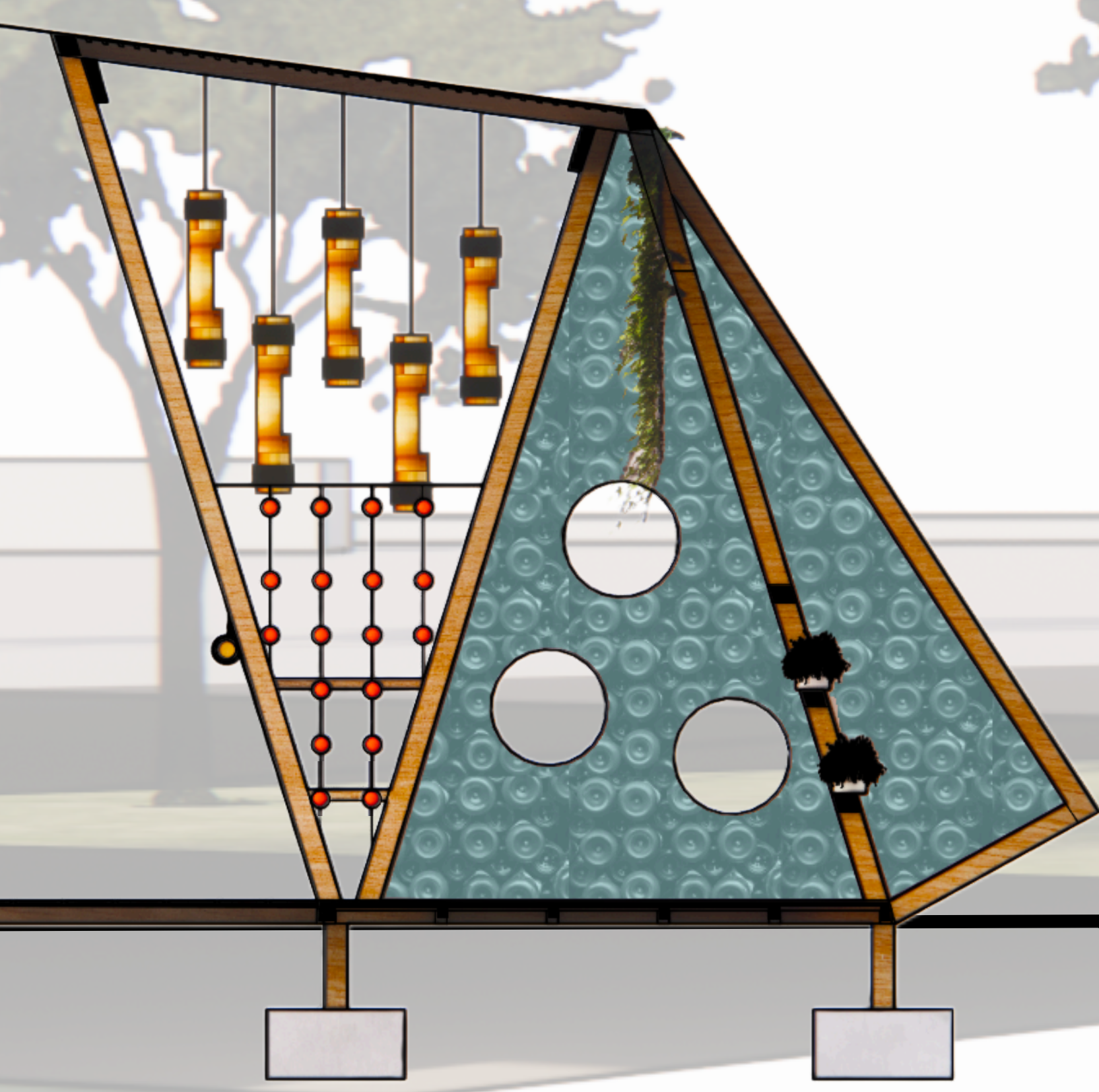


- Polycarbonate Roof
- Steel Plates
- Recycled Plastic Bottle
- Timber Column
- Ropes
- Polycarbonate Shade
- Planter Box
- Timber Platform
- Timber Post
- Pre-Cast Footing

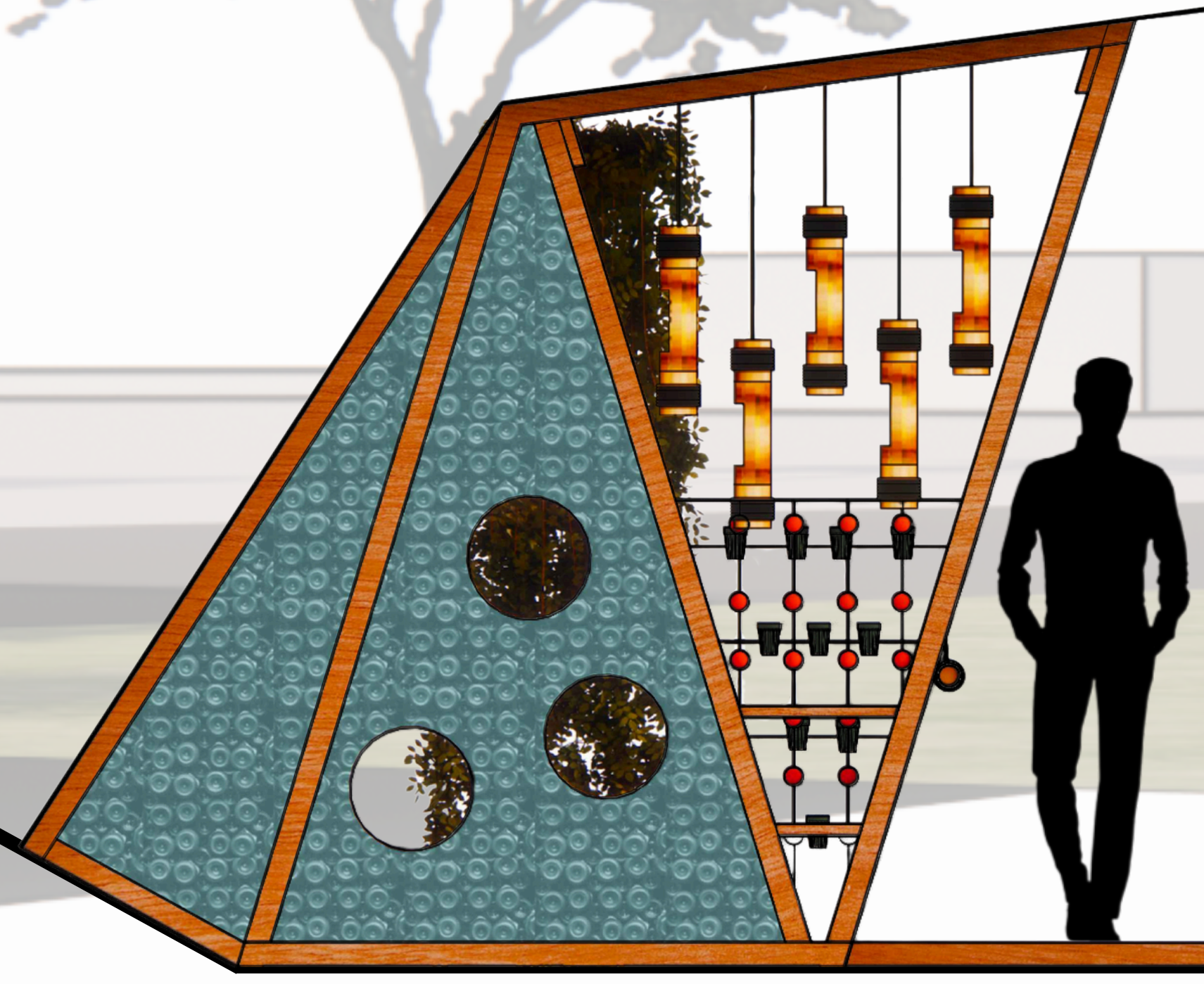
SECTIONAL DETAIL 1:20



"Sense-scape" is designed as a calm and playful refuge nestled within nature . A space where children can slow down, explore at their own pace, and engage their senses in gentle ways. Through textured walls, aromatic plants, soft filtered light, and subtle sounds, the pavilion invites moments of wonder, reflection, and interaction. It embraces the diverse ways children experience the world, offering a supportive environment that sparks curiosity while nurturing comfort and playfulness.



SECTION A-A 1:20



LEFT ELEVATION 1:20



FRONT ELEVATION 1:20



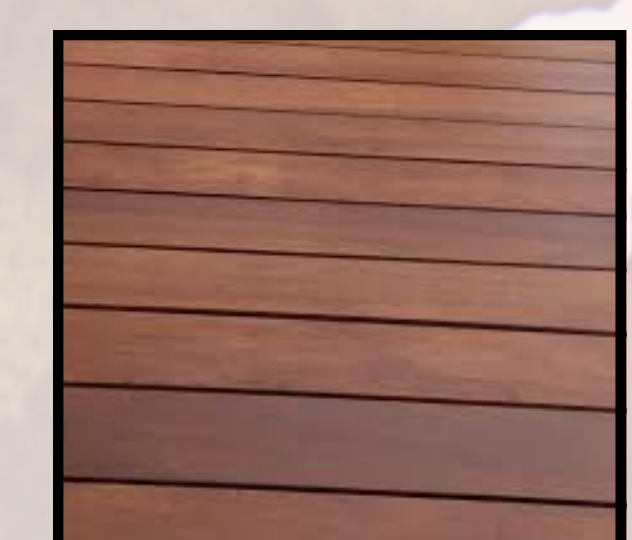
FLOORPLAN 1:20



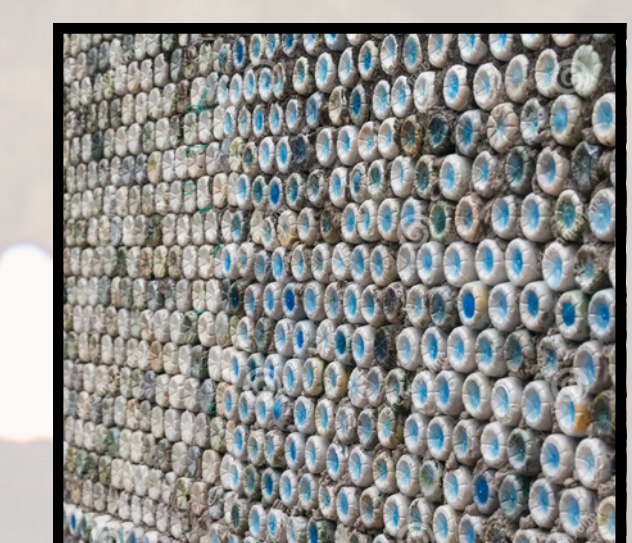
ROPE



POLYCARBONATE



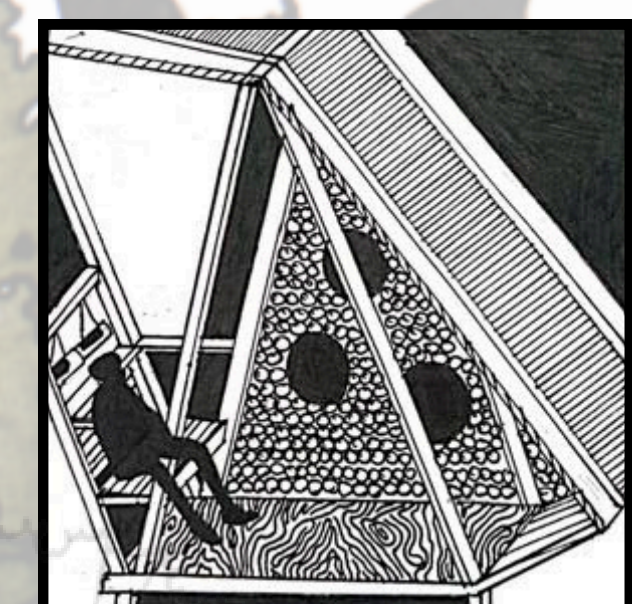
CHENGAL WOOD



RECYCLED BOTTLE



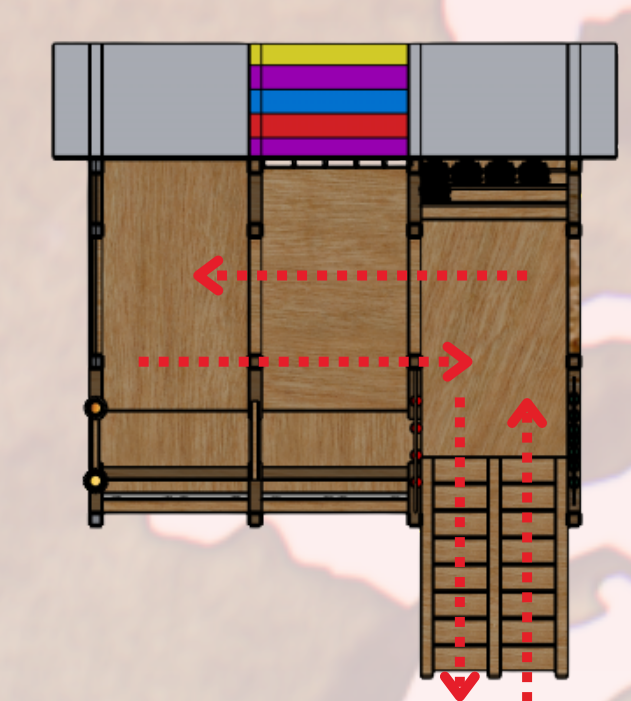
PRE-CAST CONCRETE



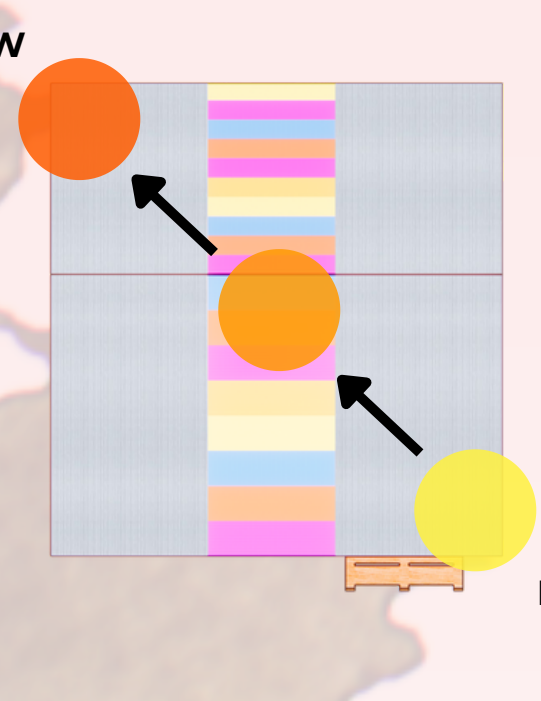
SITE RESPONSES



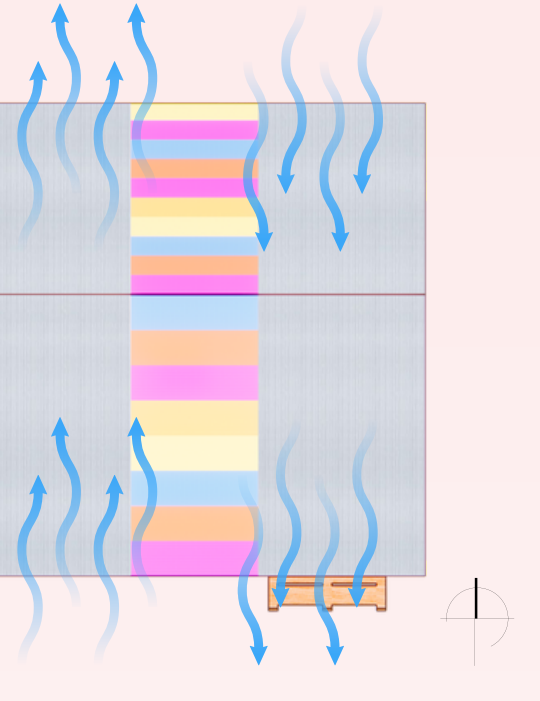
ZONING



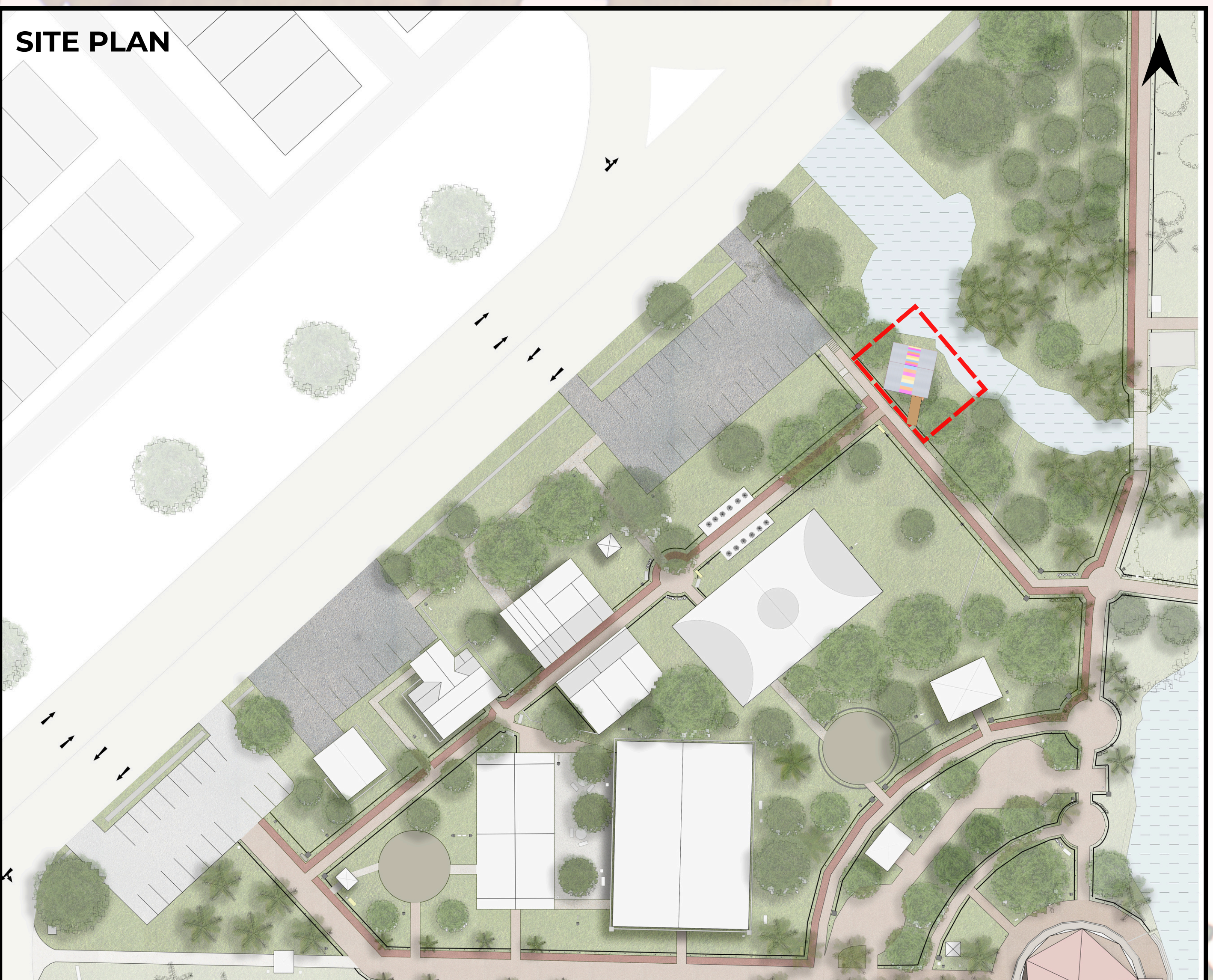
CIRCULATION



SUN PATH

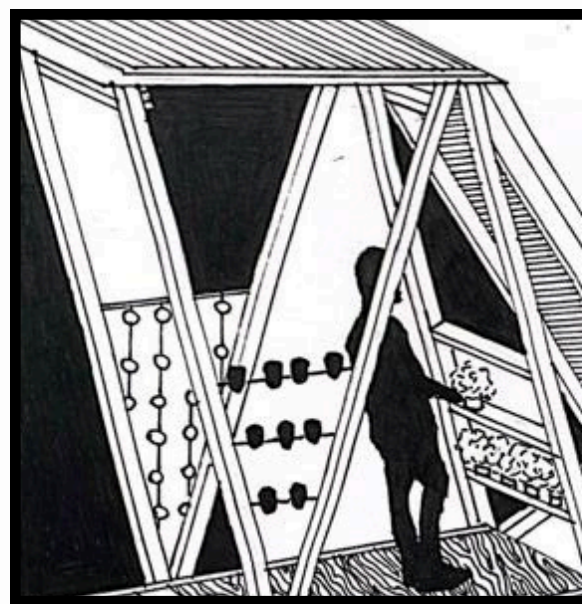
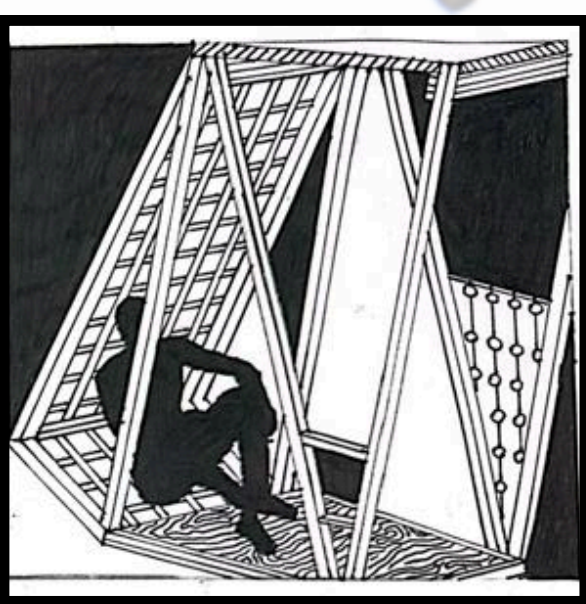


NATURAL VENTILATION



SITE PLAN

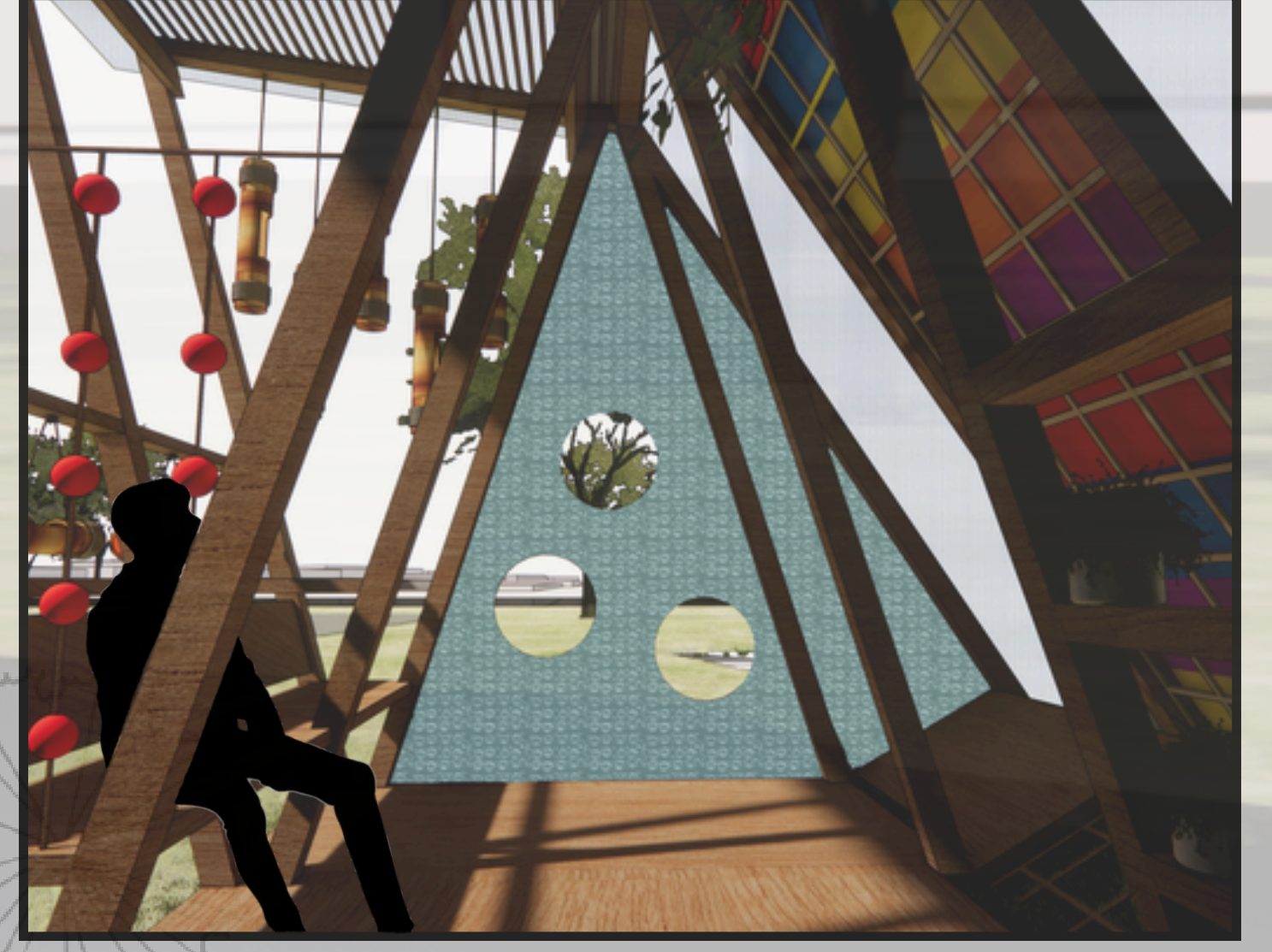
USER EXPERIENCE



INTERIOR VIEWS



EXTERIOR PERSPECTIVE



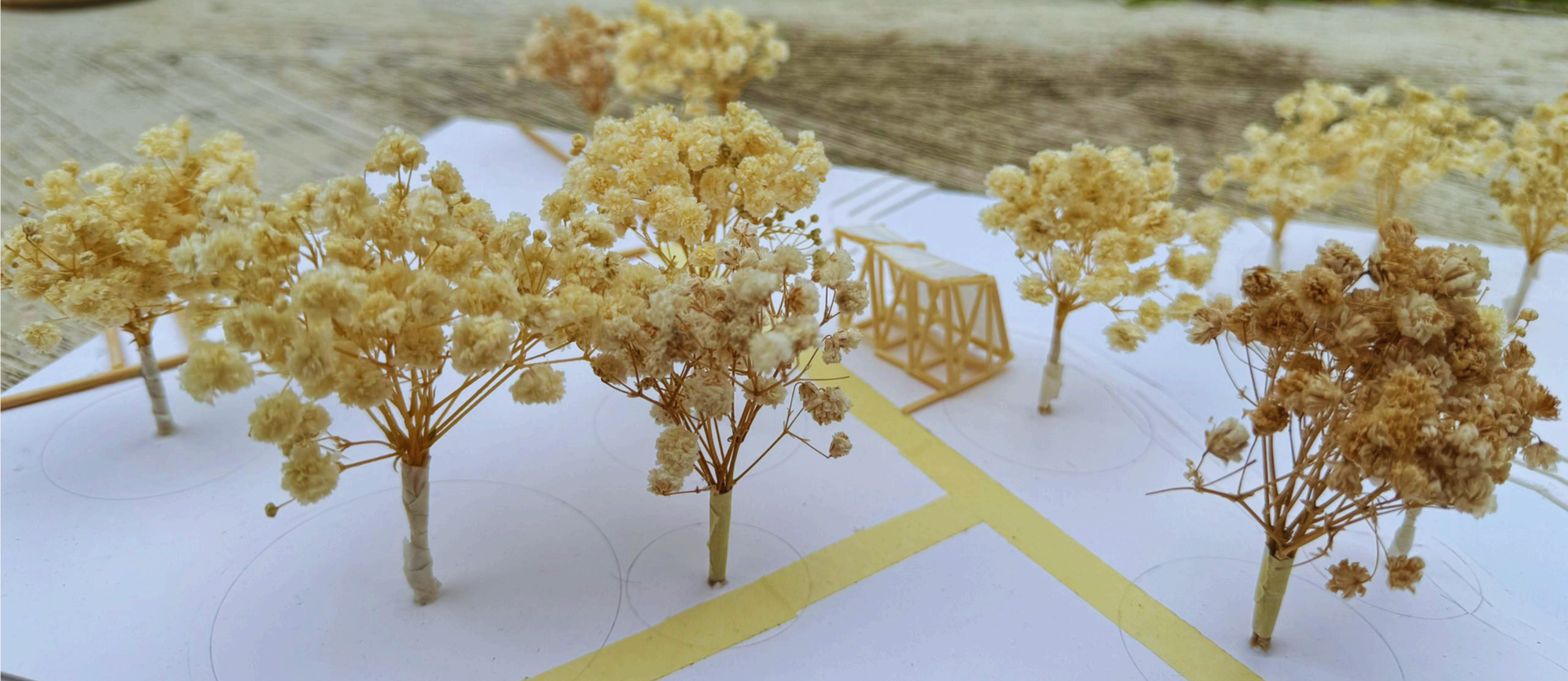
Tehjyashri Joshi (0369765)
Chris Clifford Labo (0365323)
Nicholas Lim Tze Yuan (0357671)
Ooi Yui Khai (0356933)
Colin Jonathan Susan (0350639)
Kherrmohamed Abdulhalik Mazrui (0344348)

TAYLOR'S UNIVERSITY
Wisdom · Integrity · Excellence

MODEL IMAGES



PIB MODELS



SITE PLAN



SECTIONAL CUT PERSPECTIVE



TOP VIEW



FRONT VIEW



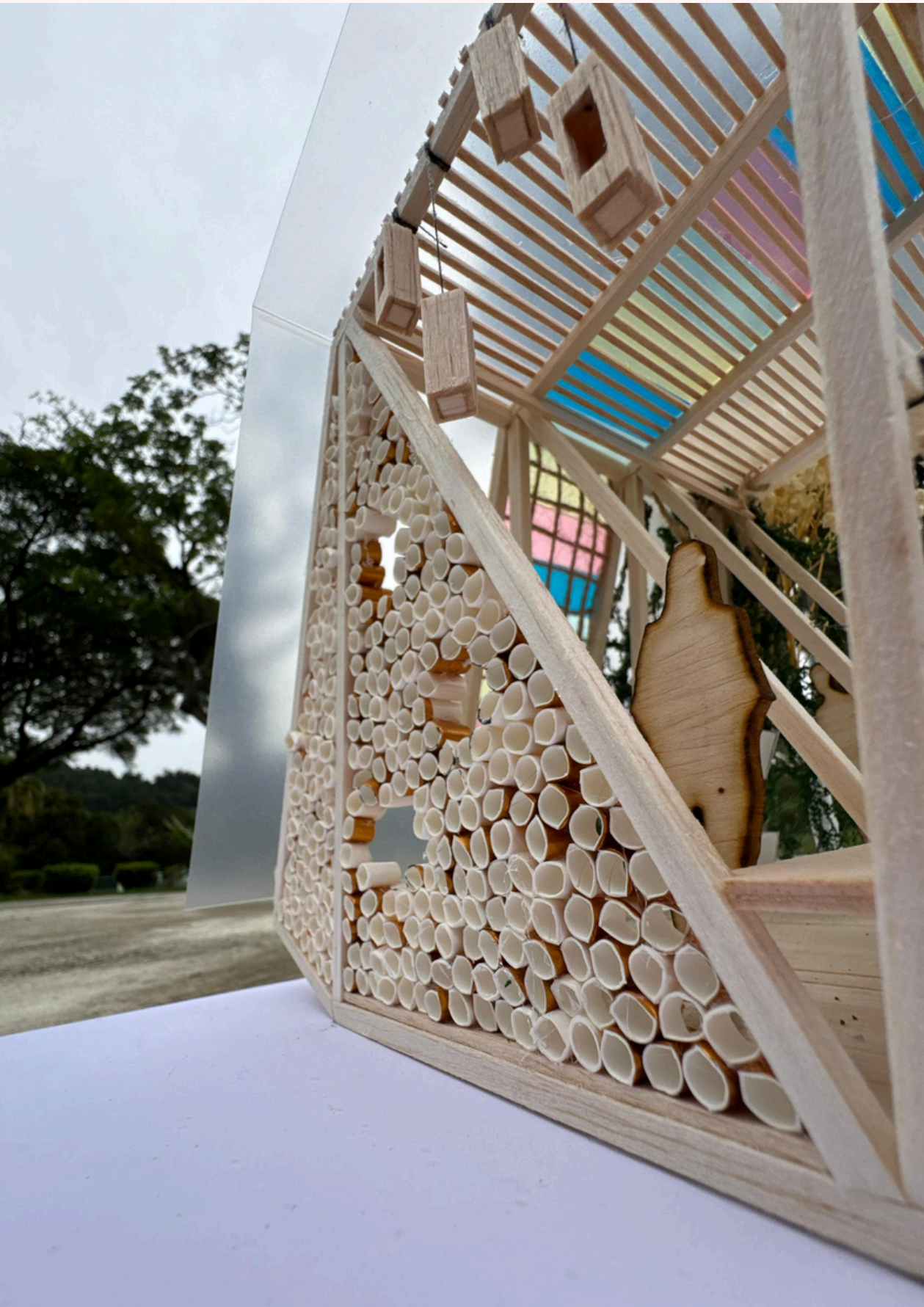
REAR VIEW



LEFT VIEW



RIGHT VIEW



PERSPECTIVES